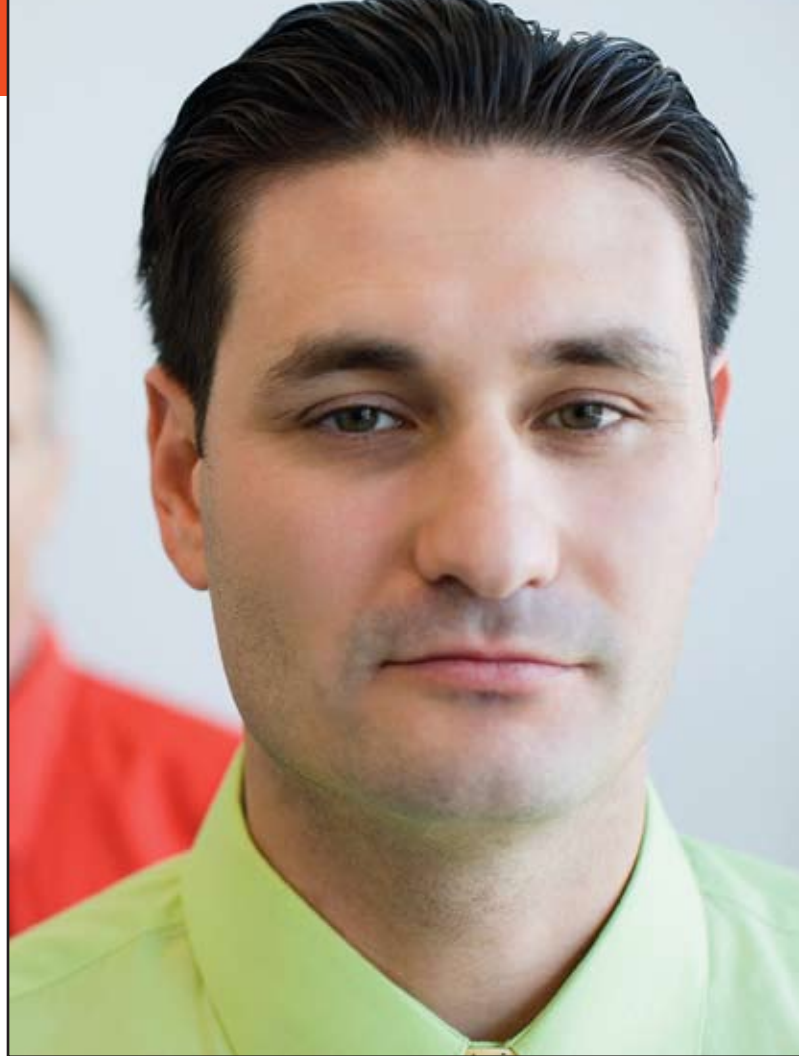


Question: With all the concerns on manufacturing safety, what can I tell my patients about the safety of the influenza vaccine?

Answer: The manufacturing process for the influenza vaccine involves:

- Each February, The World Health Organization's (WHO) Global Influenza Surveillance Network selects 6 influenza strains (3 for the northern and 3 for the southern hemisphere) which form the basis for flu vaccine production for the following fall and winter flu season.
- These strains are grown in special laboratory centres and then sent out to the flu vaccine manufacturers.
- Most manufacturing processes involve growing of the vaccine in eggs.
- Each vaccine lot is then tested on healthy individuals to ensure that the vaccine is safe and effective.
- Once the manufacturer has acquired sufficient scientific evidence that the vaccine is safe, effective and of suitable quality, a submission is filed with Health Canada for market approval.
- The National Advisory Committee on Immunization (NACI) makes their annual recommendations for the use of influenza vaccines in Canada, including the identification of groups at risk for influenza for whom vaccine programs should be targeted.



References:

Public Health Agency of Canada. Canadian Immunization Guide. Online at <http://www.phac-aspc.gc.ca/publicat/cig-gci/index-eng.php>

Public Health Agency of Canada. Vaccine Safety. Online at <http://www.phac-aspc.gc.ca/im/vs-sv/index-eng.php>

National Advisory Committee on Immunization. Online at <http://www.phac-aspc.gc.ca/naci-ccni/index-eng.php>

Canadian Paediatric Society. IMPACT. Online at <http://www.cps.ca/english/surveillance/impact/impact.htm>

Health Canada. How the flu shot makes its way from the laboratory to the doctor's office.

Online at http://www.hc-sc.gc.ca/dhp-mps/pubs/biolog/2007_flu_grippe_vac-eng.php#il

For more information, go to immunize.ca

Canadian Coalition for
Immunization Awareness & Promotion
immunize.ca

